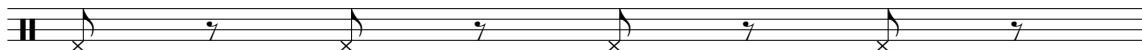


The singers should be split into three body percussion groups.  
See below for the body percussion key.  
Additionally, view the performance of *I'll Tell My Ma* at [waltonmusic.com](http://waltonmusic.com)  
to see how the body percussion should be performed.

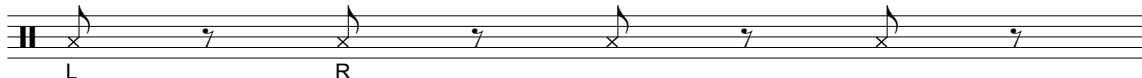
The bottom space of the percussion staff is foot stomping,  
always with the right foot.



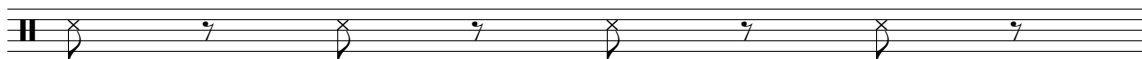
The second space of the percussion staff is thigh slapping.

**L** indicates to slap with the left hand, **R** with the right hand.

No indication means to slap with both hands.



The third space of the percussion staff is hand clapping.



The fourth space of the percussion staff is hand clapping with a partner.

Whenever the top notes appear (which happens rarely),

everyone in that group should find a partner and turn to face them.

**L** means to hit left hands together, **R** means to hit right hands together.

No indication means to hit both of your partner's hands at once.



This is a basic "patty-cake" pattern that many will remember from childhood.

