

To Dora H. Schively

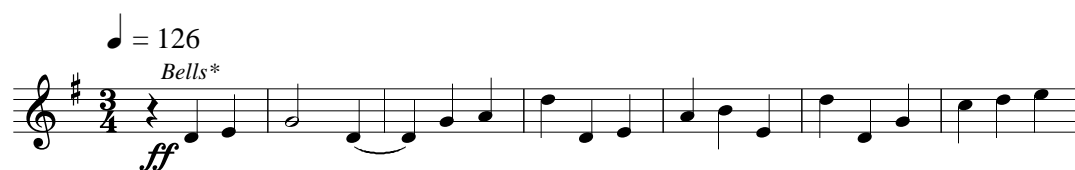
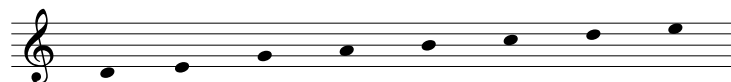
INTROIT FOR A FEAST DAY

Salve Festa Dies

for SATB Voices, Assembly, Organ, Bells*, and Gong or Cymbal

Larry King

Handbells used: (8)



8

S,A *ff*

T,B *ff*

Organ

Sal - ve, Sal - ve fes - ta di - es!

ff

* Orchestral bells preferred; all dynamics to be reduced when handbells are used.

Copyright © 1978, 2000 by GIA Publications, Inc., 7404 S. Mason Ave., Chicago, IL 60638

International Copyright Secured All Rights Reserved Printed in U.S.A.

Photocopying of this publication without permission of the publisher is a violation of the U.S. Code of Law for which the responsible individual or institution is subject to criminal prosecution. No one is exempt.

16

Gong or Cymbal

Assembly

T,B unis.

On this day the Lord has

On this day the Lord has

21

act - ed, we will re - jice and be glad in it!

act - ed, we will re - jice and be glad in it!

Sal - ve fes - ta di -

act - ed, we will re - jice and be glad in it!

rit.

S only

rit.

rit.

21

p rit.

26 $\text{♩} = 96$

Al - le - lu - ia.

Al - le - lu - ia.

$\text{♩} = 96$

simile

32

Christmas Behold, I bring good news of great joy which will come to all the people;
 Epiphany I will give you as a light to the nations, / that my salvation may reach to the end of the earth.
 Easter, Worthy is the lamb who was slain, to receive power and wealth, /
 Ascension wisdom and might, / honor and glory and blessing.
 Pentecost Tongues of fire came to rest on the believers, / and all were filled with the Ho - ly Spirit.

* Two enclosed divisions coupled together (Celestes, Vox Humanas, etc.), boxes slowly opened and closed in reverse to each other until eleventh measure from the end. Bells may play aperiodically.