

CHRISTE, LUX MUNDI

CHRIST, YOU ARE LIGHT

Taizé Community

Parts labeled with the same Roman numeral are the same parts transposed for other instruments. Suggestions for duos are found beneath each set of parts.

C Instrument: Soprano or Alto Recorder, Flute or Oboe (I, II, III)

①

I

②

II

III

(II) and Bassoon (V)

B \flat Instrument

①

I

②

II

Clarinet

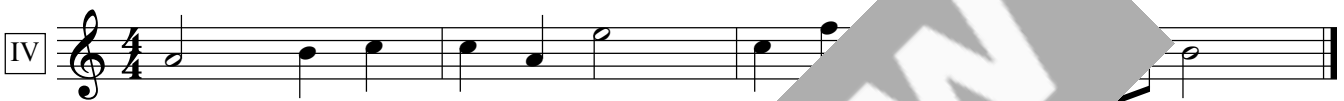
Copyright © 2007 Ateliers et Presses de Taizé.

Published and distributed in North America exclusively by GIA Publications, Inc. • All Rights Reserved • Printed in U.S.A.
7404 S. Mason Ave., Chicago, IL 60638 • www.giamusic.com • 800.442.1358

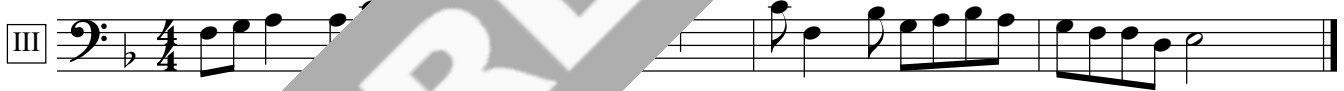
Reproduction of this publication without permission of the publisher is a violation of the U.S. Code of Law
for which the responsible individual or institution is subject to criminal prosecution. No one is exempt.

Clarinet*Clarinet or Trumpet*

**Duos: B \flat Clarinet (I, II, III, IV) and Bassoon (V)
B \flat Trumpet (IV) and Trombone (V)**

F Instrument: English Horn or Horn in F

**Duos: English Horn (IV) and Bassoon (V)
Horn in F (IV) and Trombone (V)**

Bass Instruments: Cello, Bassoon or Trombone*Bassoon**Cello*

**Duos: Oboe (I, II, III) and Bassoon (V)
B \flat Clarinet (I, II, III, IV) and Bassoon (V)
English Horn (IV) and Bassoon (V)
Horn in F (IV) and Bassoon (V)
B \flat Trumpet (IV) and Trombone (V)**

Cello, Bassoon or Trombone (ostinato)